

## Air conditioning fan heater AREO series

In line with recent HVAC trends, **Galletti** offers a universal unit for medium-sized and large industrial and commercial buildings which combines year-round heating and air-conditioning functions

Distinguishable by its original rounded shape, **AREO** stands out above all for its technical features (all models are equipped with three-speed motors and configured for operation with chilled water) and one of the lowest noise levels you will find in the market.

The **AREO** series comprises **18** models, all designed to be wall mounted (horizontal air flow) and to operate with hot water and chilled water, thanks to an innovative condensate collection and drainage system.

If used for heating only, **AREO** can also be ceiling mounted (vertical air flow).



### MAIN CONSTRUCTION FEATURES

- A pre - painted sheet steel **cabinet** complete with **ABS** corner trim, internally insulated to prevent condensate from forming on the cabinet during operation with chilled water.
- The cabinet is complete with **adjustable** aluminium **louvers** (spring - operated) placed on the air outlet which enable an optimal distribution of air within the air conditioned room.
- On the rear of the cabinet there are 4 **brackets** for suspending the fan heater from the ceiling or joining it to the mounting board for installation on the wall (accessory)
- High conductivity **heat exchanger** made with copper piping and aluminium fins assuring higher heat exchange than standard iron piping exchangers.  
The heat exchanger is set back in relation to the air outlet, an auxiliary drip tray is fitted on to the front to guarantee complete collection of condensate.
- Galvanised sheet steel **drip tray** insulated with closed - cell polyurethane, connected to the auxiliary tray.
- **Motor**  
Two Speeds, 4/6 poles or 6/8 poles, in the three - phase 400V version.  
3 speeds in the single - phase 230V (1400, 900 e 700 rpm), available for the complete range  
Upon request, the following equipment is available:  
- Polarity different from standard ones (example 4/8 poles)
- **Axial Fan** with statically balanced sickle blades housed in a specially designed compartment that enhances ventilation and reduces noise emissions.
- **Safety grille** made of electrogalvanised steel wire: it supports the motor and is fixed to the cabinet by means of vibration - damping supports
- Areo units are complete with brackets for mounting board installation (available as options).

RATED TECHNICAL DATA										
Model	Fan speed	Air flow m <sup>3</sup> /h	Heating capacity kW	Total cooling capacity kW	Sensible cooling capacity kW	Max installation height m	Sound power dB A	Sound Pressure dB A	Weight kg	Standard coil water content dm <sup>3</sup>
AREO 12	4P	1260	8,89	-	-	3,0	66	44	19,4	0,88
	6P	788	6,77	3,08	1,77	3,0	62	40		
	8P	630	5,92	2,68	1,55	3,0	56	34		
AREO 13	4P	1208	11,81	-	-	3,0	66	44	19,8	1,18
	6P	735	8,62	3,92	2,25	3,0	62	40		
	8P	599	7,53	3,40	1,97	3,0	56	34		
AREO 14	4P	1155	13,93	-	-	3,0	66	44	20,4	1,47
	6P	683	9,72	4,41	2,55	3,0	62	40		
	8P	578	8,62	3,92	2,29	2,5	56	34		
AREO 22	4P	2835	17,62	-	-	3,5	69	47	25,1	1,33
	6P	1785	13,57	5,88	3,48	3,5	63	41		
	8P	1418	11,85	5,12	3,02	3,5	57	35		
AREO 23	4P	2730	23,98	-	-	3,5	69	47	26,0	1,81
	6P	1733	18,15	8,33	4,82	3,5	63	41		
	8P	1365	15,59	7,12	4,12	3,5	57	35		
AREO 24	4P	2678	27,03	-	-	3,5	69	47	27,0	2,29
	6P	1701	20,22	9,11	5,23	3,5	63	41		
	8P	1334	17,19	7,70	4,43	3,5	57	35		
AREO 32	4P	4620	33,14	-	-	4,5	74	52	33,7	2,15
	6P	2940	25,46	10,64	6,42	4,0	65	43		
	8P	2310	22,02	9,08	5,49	3,5	59	37		
AREO 33	4P	4463	37,83	-	-	4,5	74	52	34,5	2,86
	6P	2835	28,72	12,56	7,45	4,0	65	43		
	8P	2231	24,69	10,71	6,39	3,5	59	37		
AREO 34	4P	4358	43,28	-	-	4,0	74	52	36,1	3,58
	6P	2783	32,54	15,31	8,66	3,5	65	43		
	8P	2174	27,63	12,96	7,30	3,0	59	37		
AREO 42	4P	6510	47,45	-	-	4,5	77	55	39,1	2,84
	6P	4095	36,17	-	-	4,0	69	47		
	8P	3255	31,48	14,10	8,15	3,5	62	40		
AREO 43	4P	6195	53,61	-	-	4,5	77	55	40,8	3,83
	6P	3938	40,67	-	-	3,5	69	47		
	8P	3098	34,91	16,23	9,29	3,5	62	40		
AREO 44	4P	6090	60,59	-	-	4,0	77	55	43,1	4,82
	6P	3885	45,52	-	-	3,5	69	47		
	8P	3045	38,72	17,69	10,25	3,0	62	40		
AREO 52	4P	9450	55,49	-	-	5,0	84	62	49,6	4,16
	6P	5985	42,99	-	-	4,0	73	51		
	8P	4620	37,02	16,22	9,48	4,0	67	45		
AREO 53	4P	9240	70,64	-	-	4,0	84	62	52,0	5,48
	6P	5880	54,09	-	-	4,0	73	51		
	8P	4515	45,98	21,08	12,10	4,0	67	45		
AREO 54	4P	9083	79,16	-	-	4,5	84	62	55,0	6,80
	6P	5775	60,01	-	-	4,0	73	51		
	8P	4463	50,93	24,11	13,73	3,5	67	45		
AREO 62	6P	8820	79,74	-	-	5,5	77	55	57,8	5,09
	8P	6930	68,83	28,89	16,99	5,0	71	49		
AREO 63	6P	8505	94,34	-	-	5,5	77	55	61,0	6,79
	8P	6563	79,67	37,30	21,25	5,0	71	49		
AREO 64	6P	8295	97,62	-	-	5,0	77	55	63,2	8,48
	8P	6405	82,18	39,69	22,48	4,5	71	49		

**Heating mode:** water temperature 85/75°C, air temperature 20°C

**Cooling mode:** water temperature 7/12°C, dry bulb air temperature 28°C, 55% relative humidity

Installation height referred to a difference between air inlet and outlet temperature of 15°C

**Sound pressure calculated for 5 meters distance and directional factor equal to 2**

**Fan speed:**

4 p= 4 poles, 1400  $\frac{\text{Revolution}}{\text{min}}$

6 p= 6 poles, 900  $\frac{\text{Revolution}}{\text{min}}$

8 p= 8 poles, 700  $\frac{\text{Revolution}}{\text{min}}$

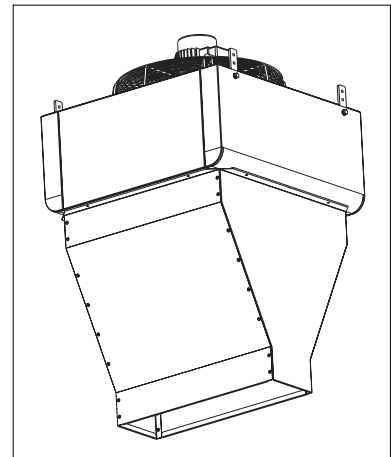
#### ATTENTION!

To prevent phenomena of condensate dripping, it is recommended to use AREO fan heaters during the cooling phase only at the speeds shown on the table (6-8 poles for sizes from AREO 12 to AREO 34; 8 poles for sizes from AREO 42 to AREO 64)

## Heaters with air curtain diffuser

In order to create a hot air barrier near doorways, AREO is also available in an air curtain diffuser version, for use with the relevant diffuser.

- Suitable for operation with hot water
- Vertical air projection
- Painted steel plate casing with internal insulation
- Support brackets for connection to threaded bars or chains
- Heat exchanger made of copper piping and aluminium fins
- Helical fan
- 2-speed tropicalized motors, with inner heat insulation, class F windings, with IP55 protection rating
- Accident-proof motor-fan support



### AREO L fan heaters with air curtain diffuser

Code	Model	Nr. Of poles	power supply V-ph-Hz	Air flow m <sup>3</sup> /h	Heating capacity kW	Price list €
AREO326801L0	AREO 32 for air curtain	6 / 8	400-3-50	2700	23,7	749,07
AREO32M031L0	AREO 32 for air curtain	4 / 6 / 8	230-1-50	2700	23,7	784,19
AREO336801L0	AREO 33 for air curtain	6 / 8	400-3-50	2650	27,00	819,29
AREO33M031L0	AREO 33 for air curtain	4 / 6 / 8	230-1-50	2650	27,00	854,41
AREO426801L0	AREO 42 for air curtain	6 / 8	400-3-50	3750	33,65	912,93
AREO42M031L0	AREO 42 for air curtain	4 / 6 / 8	230-1-50	3750	33,65	971,44
AREO436801L0	AREO 43 for air curtain	6 / 8	400-3-50	3700	38,4	983,15
AREO43M031L0	AREO 43 for air curtain	4 / 6 / 8	230-1-50	3700	38,4	1.029,97
AREO526801L0	AREO 52 for air curtain	6 / 8	400-3-50	5600	40,53	1.111,90
AREO52M031L0	AREO 52 for air curtain	4 / 6 / 8	230-1-50	5600	40,53	1.158,72
AREO536801L0	AREO 53 for air curtain	6 / 8	400-3-50	5500	50,95	1.182,13
AREO53M031L0	AREO 53 for air curtain	4 / 6 / 8	230-1-50	5500	50,95	1.240,65
AREO626801L0	AREO 62 for air curtain	6 / 8	400-3-50	8100	74,3	1.345,98
AREO62M031L0	AREO 62 for air curtain	4 / 6 / 8	230-1-50	8100	74,3	1.404,51
AREO636801L0	AREO 63 for air curtain	6 / 8	400-3-50	8000	89,14	1.463,02
AREO63M031L0	AREO 63 for air curtain	4 / 6 / 8	230-1-50	8000	89,14	1.509,84
<b>AREO fan heater for AIR CURTAIN operation, has to be necessarily matched with the relative diffuser:</b>						
AYLA3	LA 3 air curtain diffuser, size 3					105,34
AYLA4	LA 4 air curtain diffuser, size 4					122,90
AYLA5	LA 5 air curtain diffuser, size 5					152,15
AYLA6	LA 6 air curtain diffuser, size 6					193,12

Heating capacity: water temperature 85/75°C, air temperature 20°C

AREO is complete with a wide range of accessories as control panels usually associated with fan coils, thanks to the use of 230V single-phase three speed motors, a standard arrangement for all models and the operation system with chilled water.

Accessories				
Sigle	Description	AREO on applicability		
		single-phase	three-phase	air curtain
<b>Control panels</b>				
<b>CD</b>	Recess wall-mounted speed switch	<input checked="" type="checkbox"/>		
<b>CDE</b>	Wall-mounted speed switch	<input checked="" type="checkbox"/>		
<b>TD</b>	Wall-mounted speed switch, electromechanical thermostat and summer-winter selecting switch	<input checked="" type="checkbox"/>		
<b>TDC</b>	Wall-mounted speed switch and electromechanical thermostat	<input checked="" type="checkbox"/>		
<b>MCB</b>	MYCOMFORT BASE	<input checked="" type="checkbox"/>		
<b>MCM</b>	MYCOMFORT MEDIUM	<input checked="" type="checkbox"/>		
<b>MCL</b>	MYCOMFORT LARGE	<input checked="" type="checkbox"/>		
<b>MCSW</b>	WATER PROBE for versions BASE, MEDIUM and LARGE on board	<input checked="" type="checkbox"/>		
<b>KP</b>	Power interface for connecting in parallel up to 4 fan coil units to one control	<input checked="" type="checkbox"/>		
<b>TA</b>	electromechanical room thermostat	<input checked="" type="checkbox"/>	<input checked="" type="checkbox"/>	<input checked="" type="checkbox"/>
<b>TA2</b>	electromechanical room thermostat with summer winter selector	<input checked="" type="checkbox"/>	<input checked="" type="checkbox"/>	<input checked="" type="checkbox"/>
<b>CST</b>	delta/star selector for installation in electric panels		<input checked="" type="checkbox"/>	<input checked="" type="checkbox"/>
<b>CSTP</b>	delta/star selector with box for wall installation		<input checked="" type="checkbox"/>	<input checked="" type="checkbox"/>
<b>CSD</b>	wall mounted control panel for opening and closing of the motor driven air intake louver <b>PAEMM</b>	<input checked="" type="checkbox"/>	<input checked="" type="checkbox"/>	
<b>Mounting boards</b>				
<b>DFP</b>	wall mounting board	<input checked="" type="checkbox"/>	<input checked="" type="checkbox"/>	
<b>DFC</b>	column mounting board	<input checked="" type="checkbox"/>	<input checked="" type="checkbox"/>	
<b>DFO</b>	adjustable wall/column mounting board	<input checked="" type="checkbox"/>	<input checked="" type="checkbox"/>	
<b>Fresh air intake</b>				
<b>PAE</b>	fresh air intake louver	<input checked="" type="checkbox"/>	<input checked="" type="checkbox"/>	
<b>PAE M</b>	manual mixing fresh air intake louver	<input checked="" type="checkbox"/>	<input checked="" type="checkbox"/>	
<b>PAE MM</b>	motor driven mixing air intake louver, modulating motor, 24V IP 54, with spring return	<input checked="" type="checkbox"/>	<input checked="" type="checkbox"/>	
<b>GR</b>	fresh air intake grille	<input checked="" type="checkbox"/>	<input checked="" type="checkbox"/>	
<b>Air diffusers</b>				
<b>DO</b>	Two-row fin diffuser	<input checked="" type="checkbox"/>	<input checked="" type="checkbox"/>	
<b>R</b>	Protection grille for gymnasium	<input checked="" type="checkbox"/>	<input checked="" type="checkbox"/>	
<b>LA</b>	Air curtain diffuser			<input checked="" type="checkbox"/>



**DFO**  
The DFO option (made in steel of adequate thickness) allows to orient the fan heater as needed (towards left or right), during the installation on indoor columns or walls. The fan heater is connected to the wall mounting board by mean of the four brackets in the back panel of the unit (connection and option mounting screws supplied).

**PAE MM**  
Motor driven mixing louver for the fresh air and room air intake, supplied with a modulating motor 24V (transformer included) with spring return for the automatic closing of the louver in case of black out. The motor can be connected to auxiliary contacts for the automatic opening and closing of the louver (extractor, antifreeze thermostat etc.) The motor driven mixing air intake louver has to be matched to the **CSD** control panel for the proportional opening and closing. The kit includes also the the fixing brakets for wall installation



## Fan heaters for steam operation AREO S

The fan heater for steam operation are mainly made of the components listed below.

Prepainted sheet steel cabinet complete with heat-proof ABS corner trim. The cabinet is complete with adjustable aluminium louvers (spring operated) placed on the air outlet which allow an optimal distribution of the air within the heated room.

They are supplied with **brackets** for suspending the fan heater to the ceiling or joining it to the mounting board for installation on the wall (accessory). High conductivity **heat exchanger** made with copper tubes and aluminium fins assuring higher heat exchange than standard iron tubes exchangers. All circuit are in parallel without siphons to drain perfectly the condensed steam.

**All motors are standard equipped with:**

- internal thermal protection (klixon)
- windings in class F
- protection degree IP55.
- Two speeds, 4/6 poles or 6/8 poles, in the 400 / 3 / 50 version, delta-star type.

**Axial fan** with statically balanced sickle blades housed in a specially designed compartment that enhances ventilation and reduces noise emissions.

**Safety grille** made of electrogalvanised steel wire: it supports the motor and is fixed to the cabinet by means of vibration damping supports.



AREO S - fan heater for steam operation						
Code	Model	Nr. Of poles	power supply V-ph-Hz	Air flow m <sup>3</sup> /h	Heating capacity kW	Price list €
AREO124601S0	AREO S 12	4 / 6	400-3-50	1150	12,00	819,29
AREO224601S0	AREO S 22	4 / 6	400-3-50	2600	24,50	994,86
AREO324601S0	AREO S 32	4 / 6	400-3-50	4250	39,30	1.170,42
AREO424601S0	AREO S 42	4 / 6	400-3-50	5900	55,4	1.287,47
AREO524601S0	AREO S 52	4 / 6	400-3-50	8800	79,4	1.568,81
AREO626801S0	AREO S 62	6 / 8	400-3-50	8100	92,6	1.755,64

Accessories	
Sigle	Description
<b>Control panels</b>	
TA	Room thermostat
TA2	Roomn thermostat with summer/winter selector
CST	delta/star selector for installation in electric panels
CSTP	delta/star selector with box for wall installation
<b>Mounting boards</b>	
DFP	wall mounting board
DFC	column mounting board
DFO	adjustable wall/column mounting board
<b>Fresh air intake and louvers</b>	
PAE	fresh air intake louver
GR	fresh air intake grille
<b>Air diffuser</b>	
DO	Two-row fin diffuser
R	protection net ball blow for gymnasium

## S 80 Ceiling-mounted fan heaters

**S 80** fan heaters are designed to be ceiling mounted and deliver a vertical air flow. The series comprises 16 models that utilise hot or superheated water. 9 models can also work with steam.

**S 80** fan heaters are characterised by high air flow rates and installation heights which, together with their low-noise operation, make them ideal for medium-sized and large interiors such as warehouses, factories, showrooms, etc..

**On request** S80 fan heaters can be supplied complete with a **drip tray**. Thanks to this engineering solution, the heat exchanger can also be supplied with chilled water, an effective and economical method for cooling interiors in summertime.

The minimum temperature of incoming water is 8 °C:

Do not use the fan heaters for cooling at the speed of 1400 rpm (4 poles). The installation height should always be determined according to heating requirements.

If possible, use anemostat or truncated cone diffusers for a better distribution of air.

### Constructive features

**Heat exchanger:** made up of copper tubing and aluminium fins, steel plumbing connections. Thanks to the heat exchanger circuits (all circuits are parallel), 9 models of the S80 series can also utilise steam at low pressure (maximum 6 bars). The steam-compatible models are: S610, S620, S630, S810, S820, S830, S840, S1110, S1120

**Fan:** dynamically and statically balanced axial-flow fan built from sparkproof aluminium, directly keyed to the motor.

In case of low-height installation an anti-accident steel grille grants both a total protection and compliance to units directives.

**Motor:** three-phase asynchronous, closed type, with protection rating IP 44 and class B windings, one or two speeds:

for models from S 610 to S 841

- 4 poles (1400 rpm)
- 6 poles (900 rpm)
- 4/8 poles (1400-700 rpm) **for models S 1110 and S 1120**
- 6 poles (900 rpm)
- 8 poles (700 rpm)
- 6/8 poles (900-700 rpm)

**on request, motors with the following features may be supplied:**

- 230 V single-phase power supply with permanently switched on capacitor
- protection rating IP 55
- tropicalized construction
- EEx-d IIB T3 flameproof construction
- two-speed 4/6-pole motors

The motor is set in an upright position inside a sheet steel cone that shields it from the heat radiated by the exchanger.

### Accessories

The diffusers available as accessories provide even, optimal distribution of heated air throughout the room.

- **Truncated cone diffuser**
- **Anemostat diffuser**
- **Diffuser with adjustable flaps**



### RATED TECHNICAL DATA WATER OPERATION

S 80	fan speed operation rpm	Heating capacity kW	Air flow m <sup>3</sup> /h	Sound pressure level dB/A
S 610/4	1400	14,48	2600	57
S 610/6	900	10,95	1750	47
S 610/8	700	9,41	1300	41
S 611/4	1400	16,00	2600	57
S 611/6	900	12,12	1750	47
S 611/8	700	10,40	1300	41
S 620/4	1400	19,24	2600	59
S 620/6	900	14,57	1750	49
S 620/8	700	12,51	1300	43
S 621/4	1400	21,51	2600	59
S 621/6	900	16,28	1750	49
S 621/8	700	13,98	1300	43
S 630/4	1400	28,37	4200	60
S 630/6	900	21,48	2850	50
S 630/8	700	18,44	2100	44
S 631/4	1400	32,33	4200	60
S 631/6	900	24,47	2850	50
S 631/8	900	21,01	2100	44
S 810/4	1400	38,66	6200	62
S 810/6	900	29,27	4200	55
S 810/8	700	25,13	3100	45
S 811/4	1400	43,63	6200	64
S 811/6	900	33,02	4200	56
S 811/8	700	28,36	3100	46
S 820/4	1400	46,98	6200	64
S 820/6	900	35,56	4200	56
S 820/8	700	30,53	3100	46
S 821/4	1400	51,90	7450	69
S 821/6	900	39,28	5050	58
S 821/8	900	33,73	3725	48
S 830/4	1400	60,00	7450	68
S 830/6	900	45,41	5050	57
S 830/8	700	39,00	3725	47
S 831/4	1400	68,29	9150	68
S 831/6	900	51,69	6200	57
S 831/8	900	44,39	4575	47
S 840/4	1400	72,62	9150	68
S 840/6	900	54,95	6200	57
S 840/8	700	47,20	4575	47
S 841/4	1400	78,69	9150	69
S 841/6	900	59,55	6200	58
S 841/8	700	51,15	4575	48
S 1110/6	900	90,12	12200	59
S 1120/6	900	109,88	17500	61

Sound pressure calculated for 4 meters distance and directional factor equal to 2

### RATED TECHNICAL DATA STEAM OPERATION

S 80	Fan speed operation rpm	Heatinf capacity kW	Air flow m <sup>3</sup> /h	Sound pressure level dB/A
S 610/4	1400	24,50	2600	57
S 620/4	1400	33,50	2600	59
S 630/4	1400	49,50	4200	60
S 810/4	1400	59,50	6200	62
S 820/4	1400	75,00	6200	64
S 830/4	1400	89,00	7450	68
S 840/4	1400	113,00	9150	68
S 1110/6	900	135,00	12200	59
S 1120/6	900	172,00	17500	61

S80 - fan heaters for ceiling installation						
Code	Model	fan speed RPM	Power supply V-fph-Hz	Air flow m <sup>3</sup> /h	Heating capacity kW	Price list €
4610043	S610/4	1400	230-1-50	2600	14,50	669,36
4610040	S610/4	1400	230/400-3-50	2600	14,50	638,24
4610481	S610/4-8	1400-700	230-3-50	2600-1300	14,5-9,4	707,30
4610483	S610/4-8	1400-700	230-1-50	2600-1300	14,5-9,4	765,77
4610482	S610/4-8	1400-700	400-3-50	2600-1300	14,5-9,4	707,30
4610063	S610/6	900	230-1-50	1750	11,00	726,59
4610060	S610/6	900	230/400-3-50	1750	11,00	664,99
4611043	S611/4	1400	230-1-50	2600	16,00	690,50
4611040	S611/4	1400	230/400-3-50	2600	16,00	659,40
4611481	S611/4-8	1400-700	230-3-50	2600-1300	16 - 10,4	729,08
4611483	S611/4-8	1400-700	230-1-50	2600-1300	16 - 10,4	795,01
4611482	S611/4-8	1400-700	400-3-50	2600-1300	16 - 10,4	729,08
4611063	S611/6	900	230-1-50	1750	12,1	748,36
4611060	S611/6	900	230/400 - 3 - 50	1750	12,1	686,15
4620043	S620/4	1400	230-1-50	2600	19,2	753,96
4620040	S620/4	1400	230/400-3-50	2600	19,2	722,83
4620481	S620/4-8	1400-700	230-3-50	2600-1300	19,2 - 12,5	801,25
4620483	S620/4-8	1400-700	230-1-50	2600-1300	19,2-12,5	849,12
4620482	S620/4-8	1400-700	400-3-50	2600-1300	19,2-12,5	801,25
4620063	S620/6	900	230-1-50	1750	14,6	811,82
4620060	S620/6	900	230/400-3-50	1750	14,6	750,23

**Available on request:**

- Motors with protection rating IP55 Additional charge 20%
- Tropicalized motors Additional charge 20%
- 4/6 or 6/8 pole motors Additional charge 10% (stand 4/8 poles)
- 6/12 pole motors Additional charge 20% (stand 6 poles)
- Configuration for operation in cooling mode (only for 6 poles models) Additional charge 20%

S80 - fan heaters for ceiling installation						
Code	Model	fan speed RPM	Power supply V-fph-Hz	Air flow m <sup>3</sup> /h	Heatingh capacity kW	Price list €
4830040	S830/4	1400	230/400-3-50	7450	60	1.311,33
4830481	S830/4-8	1400-700	230-3-50	7450 - 3725	60 - 39	1.409,63
4830482	S830/4-8	1400-700	400 - 3 - 50	7450 - 3725	60 - 39	1.409,63
4830060	S830/6	900	230/400-3-50	5050	45,40	1.358,00
4831040	S831/4	1400	230/400-3-50	9150	68,30	1.331,25
4831481	S831/4-8	1400-700	230-3-50	9150 - 4575	68,3 - 44,4	1.432,03
4831482	S831/4-8	1400-700	400 - 3 - 50	9150 - 4575	68,3 - 44,4	1.432,03
4831060	S831/6	900	230/400-3-50	6200	51,7	1.380,39
4840040	S840/4	1400	230/400-3-50	9150	72,6	1.400,91
4840481	S840/4-8	1400-700	230-3-50	9150 - 4575	72,6 - 47,2	1.500,45
4840482	S840/4-8	1400-700	400 - 3 - 50	9150 - 4575	72,6 - 47,2	1.500,45
4840060	S840/6	900	230/400-3-50	6200	55	1.449,43
4841040	S841/4	1400	230/400-3-50	9150	78,7	1.468,71
4841481	S841/4-8	1400-700	230-3-50	9150 - 4575	78,7 - 51,2	1.580,70
4841482	S841/4-8	1400-700	400 - 3 - 50	9150 - 4575	78,7 - 51,2	1.580,70
4841060	S841/6	900	230/400-3-50	6200	59,60	1.517,25
4110060	S1110/6	900	230/400-3-50	12200	90,1	1.581,95
4120060	S1120/6	900	230/400-3-50	17500	109,9	1.825,79

**Available on request:**

- Motors with protection rating IP55 Additional charge 20%
- Tropicalized motors Additional charge 20%
- 4/6 or 6/8 pole motors Additional charge 10% (stand 4/8 poles)
- 6/12 pole motors Additional charge 20% (stand 6 poles)
- Configuration for operation in cooling mode (only for 6 poles models) Additional charge 20%

Accessories		
Code	Descrizione	Price list €
401753	Diffuser with adjustable flaps, models from S610 to S631	80,88
401763	Diffuser with adjustable flaps, models from S810 to S821	91,45
401773	Diffuser with adjustable flaps, models from S830 to S841	104,50
401783	Diffuser with adjustable flaps, models S1110 and S1120	128,78
401973	Anemostat diffuser, models from S610 to S631	295,48
401983	Anemostat diffuser, models from S810 to S821	319,74
401993	Anemostat diffuser, models from S830 to S841	345,25
402003	Anemostat diffuser, models S1110 and S1120	424,88
402043	Truncated cone diffuser, models from S610 to S631	99,54
402053	Truncated cone diffuser, models from S810 to S841	105,76
402063	Truncated cone diffuser, models S1110 and S1120	186,63

## DST air de-stratifiers

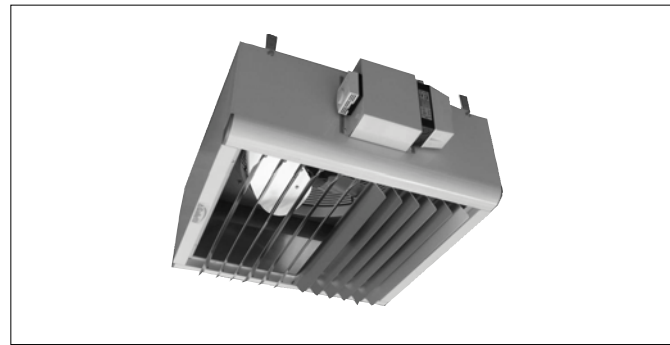
In work environments heated with hot-air systems, the need to maintain a temperature of about 18°C near floor level to ensure the occupants' comfort means accumulating a considerable amount of heat at the top of the room. This heat, unused, is eventually dispersed to the outside.

The **DST** de-stratifier eliminates this problem by generating a vertical air flow capable of reducing the temperature difference between the floor and ceiling levels to about 3°C.

In warmer seasons, the DST de-stratifier can be used to provide effective ventilation.

### CONSTRUCTIVE FEATURES

- **Cabinet:** made of pre-painted sheet steel complete with ABS corner trim, it is complete with adjustable air outlet flaps (spring-operated) to allow optimal distribution within the room.
- **Axial fan** with statically balanced sickle blades housed in a specially designed compartment that guarantees effective ventilation and reduces noise emissions.
- **Safety grille** made of electrogalvanised steel wire: it supports the motor and is fixed to the cabinet by means of vibration-damping supports.
- **Motor:** with the following standard features - two speeds in
  - **400V three-phase** configuration
  - star-delta type
  - 4-pole wiring in model **DST 14**
  - 6 poles in higher models.
  - tropicalized
  - equipped with internal safety thermal cutout
  - protection rating **IP 55**
  - **class F** windings
- **Overload cutout:** to protect motor, manually reset.
- **Regulation thermostat:** connected to a contactor enabling the DST de-stratifier to be started and to operate at the set temperature.
- **Mounting brackets:** galvanised steel, for suspending the unit from the ceiling.



### Guidelines for choosing

- 1) Establish the height at which the units will be installed in the room.
- 2) Calculate the volume above this height and consider a recirculation rate of about 5 volumes/hour.
- 3) Identify the unit having an air flow capacity equal to or greater than the total volume to be recirculated and the optimal installation height.

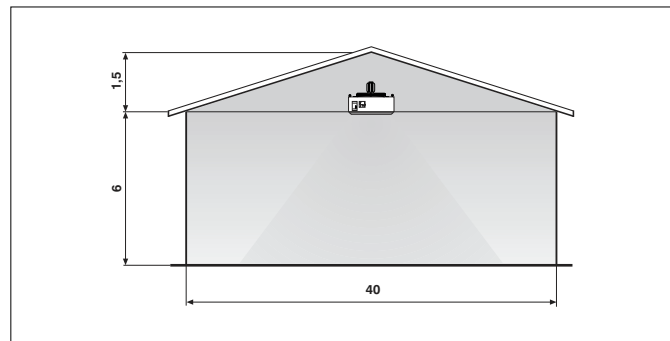
### EXAMPLE

Room size:

- width 40 m
- length 100 m
- height 7.5 m

De-stratifier installation height 6 m, the volume above the unit will be equal to 3000 m<sup>3</sup>; recirculate at least 3000 x 5 = 15000 m<sup>3</sup>/h.

The optimal choice will be 3 **DST 46**.



TECHNICAL DATA							
Model		DST 14	DST 26	DST 36	DST 46	DST 56	DST 66
Fan speed		1400	900	900	900	900	900
Air flow	m <sup>3</sup> /h	1750	2750	3800	5000	6650	9500
Min. installation height	m	3	3,5	4,5	5	7	6,5
Max installation height	m	5	5,5	7	7,5	9	10
Power supply	V - ph - Hz	400-3-50	400-3-50	400-3-50	400-3-50	400-3-50	400-3-50
Power input	W	67	178	294	471	860	540
Current Absorbed	A	0,21	0,4	0,58	0,85	1,37	1,18
Sound power	dB A	66	63	65	69	73	77
Sound pressure	dB A	44	41	43	47	51	51
Weight	kg	16	21	28	35	42	48

Weighted sound pressure level A, assuming a distance of 5 m and Q factor =2

DST air de-stratifiers							
Code	model	fan speed RPM	power supply V-ph-Hz	Air flow m <sup>3</sup> /h	Min. installation height m	Max. installation height m	Price list €
<b>DST14010</b>	<b>DST 14</b>	1400	400-3-50	1750	3,00	5,00	<b>555,95</b>
<b>DST26010</b>	<b>DST 26</b>	900	400-3-50	2750	3,50	5,50	<b>585,22</b>
<b>DST36010</b>	<b>DST 36</b>	900	400-3-50	3800	4,50	7,00	<b>643,73</b>
<b>DST46010</b>	<b>DST 46</b>	900	400-3-50	5000	5,00	7,5	<b>702,25</b>
<b>DST56010</b>	<b>DST 56</b>	900	400-3-50	6650	7,00	9	<b>743,22</b>
<b>DST66010</b>	<b>DST 66</b>	900	400-3-50	9500	6,50	10	<b>790,03</b>